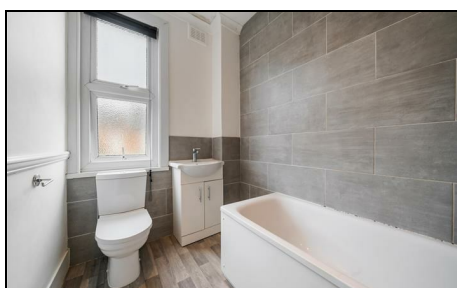


Clifton Park Avenue Raynes Park, SW20 8BB

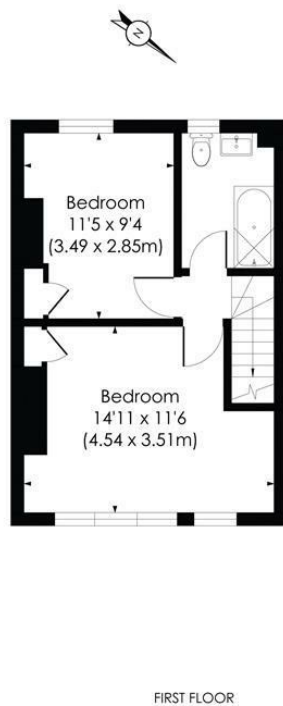
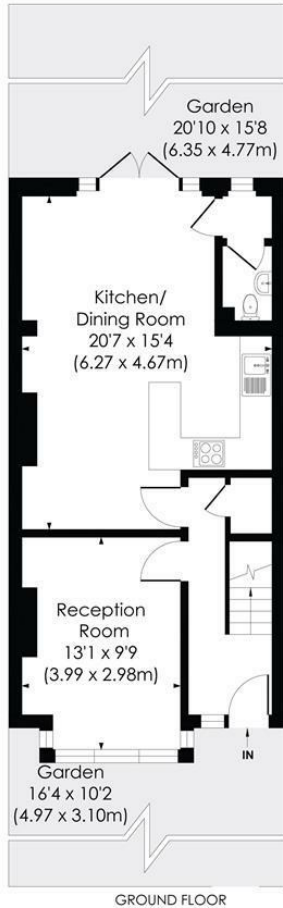
£700,000 Freehold



This well presented TWO DOUBLE BEDROOM, rear extended Edwardian "Apostle" House is perfectly located for Raynes Park High Street and Station. There is a separate front reception room, extended open plan kitchen/dining room, downstairs w.c, two double bedrooms and a modern family bathroom. Potential to further extend to the loft s.t.p.p. Sold with no onward chain.

CLIFTON PARK AVENUE, SW20

Approx. Gross Internal Floor Area
842 Sq. ft/78.2 Sq. m



© Pixangle Property Marketing Ltd. info@pixangle.com Tel: 0208 870 2118



This floor plan has been prepared for the purpose of illustration only in accordance with the latest RICS code of measuring practice and is not to scale. All measurements and areas are approximate and whilst every effort has been made to ensure the accuracy of the plan contained here, no responsibility is taken for any error, omission or misstatement.

- Two Double Bedroom - Rear Extension
- Mid Terrace Edwardian "Apostle" House
- 0.1 Mile to Raynes Park High Street and Station
- Open Plan Kitchen/Dining Room - Downstairs W.C
- Separate Front Reception Room
- Modern Bathroom
- Potential to Extend to Loft S.T.P.P
- No Onward Chain
- Council Tax Band - D
- EPC Rating - C



Energy Efficiency Rating		Current	Potential
<small>Low energy efficient - lower running costs</small>			
A	(92-100)		87
B	(81-91)		
C	(69-80)	69	
D	(55-68)		
E	(39-54)		
F	(21-38)		
G	(1-20)		
<small>High energy efficient - higher running costs</small>			
England & Wales		EU Directive 2002/91/EC	

For Free Mortgage Quote and Best Mortgage Rates, call Ellisons Mortgage Advisor on 0208 944 9595



Although these particulars are believed to be correct, their accuracy is not guaranteed and they do not form part of any contract.

Celebrating 30 years of successful Sales and Lettings in Merton

